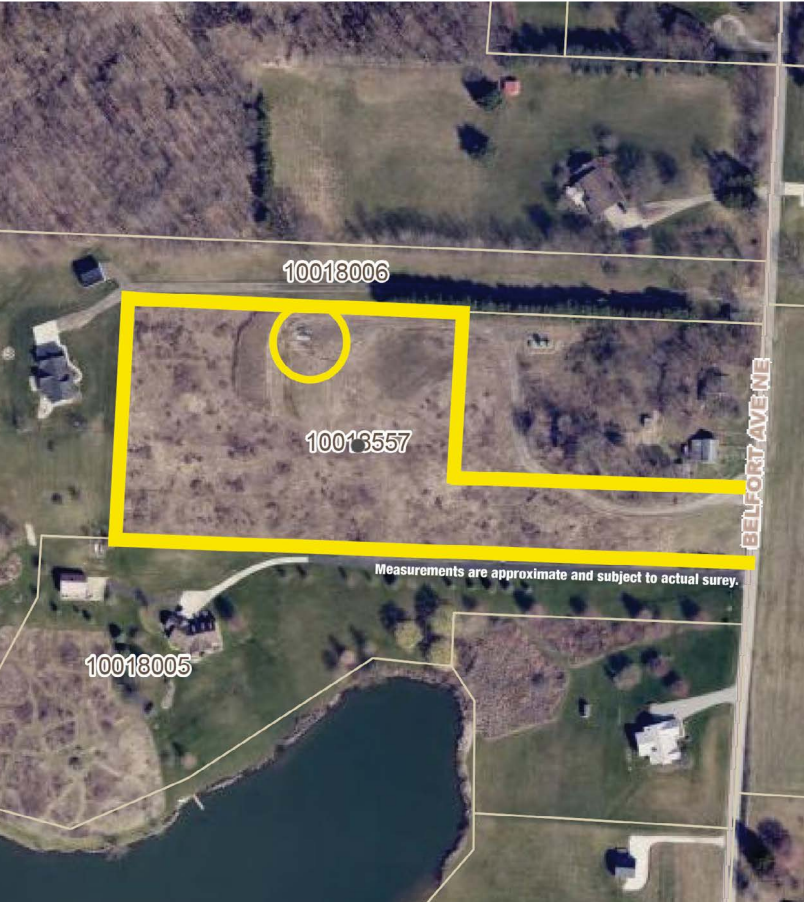


ABSOLUTE AUCTION

TUESDAY, SEPTEMBER 10, 2024, 6:00 PM



REAL ESTATE



LIVE AUCTION WITH ONLINE BIDDING

REAL ESTATE

Real estate features 6.18 acres of land in an area of nice homes. Mineral rights do not transfer. Walk the property at your own convenience. Osnaburg LSD.

TERMS ON REAL ESTATE

10% down auction day, balance due at closing. A 10% buyer's premium will be added to the highest bid to establish the purchase price. Any desired inspections must be made prior to bidding. All information contained herein was derived from sources believed to be correct. Information is believed to be accurate but not guaranteed.

AUCTION BY ORDER OF

Timothy & Bonnie Au

6.18 ACRES OF LAND

Stark County
Osnaburg Twp.
Osnaburg LSD

BELFORT AVE. NE,
LOUISVILLE, OH 44641



MATTHEW P. KIKO
AUCTIONEER/REALTOR®
330.327.9617
mattkiko@kikocompany.com

www.kikoauctions.com | 800.533.5456

Information is believed to be accurate but not guaranteed.
KIKO Auctioneers



Scan for auction details, including directions.

Absolute Auction.
All sells to the highest bidder on location.